

East Elevation



North Elevation



West Elevation



South Elevation

CASSETTA RESIDENCE



SIDE ELEVATION



FRONT ELEVATION



SIDE ELEVATION



FRONT ELEVATION

CASSETTA RESIDENCE



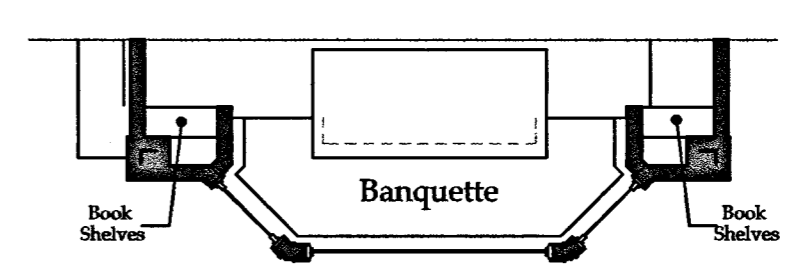
East Elevation

North Elevation



West Elevation

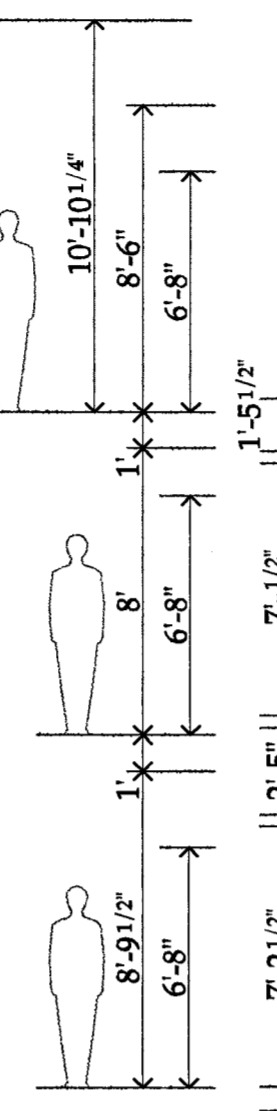
South Elevation



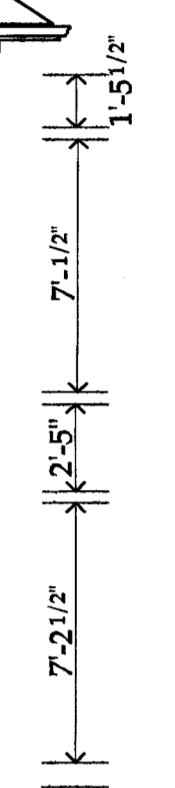
CASSETTA RESIDENCE
2/15/01



East Elevation

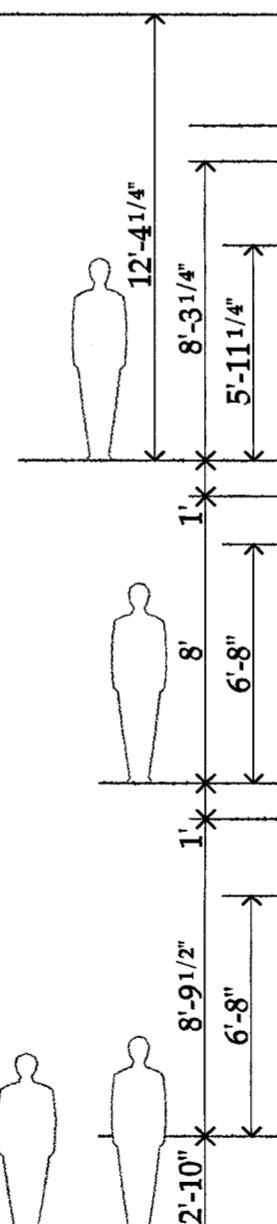


North Elevation



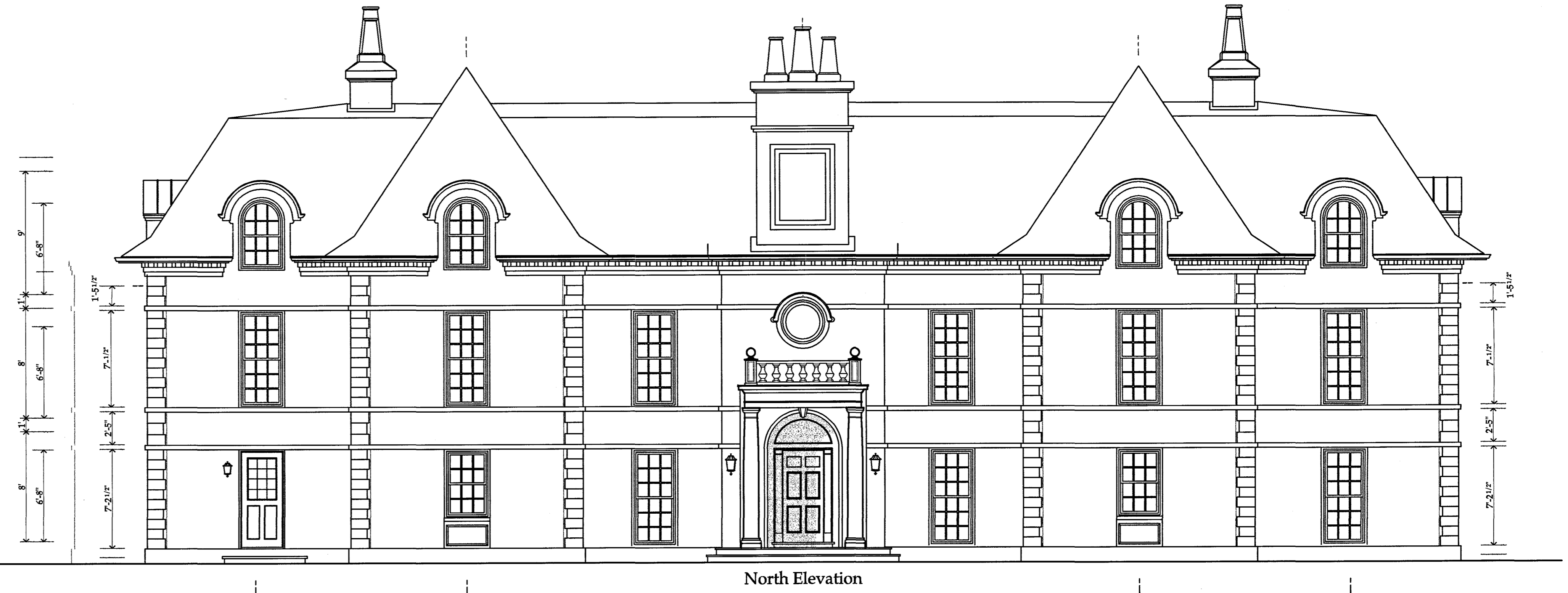
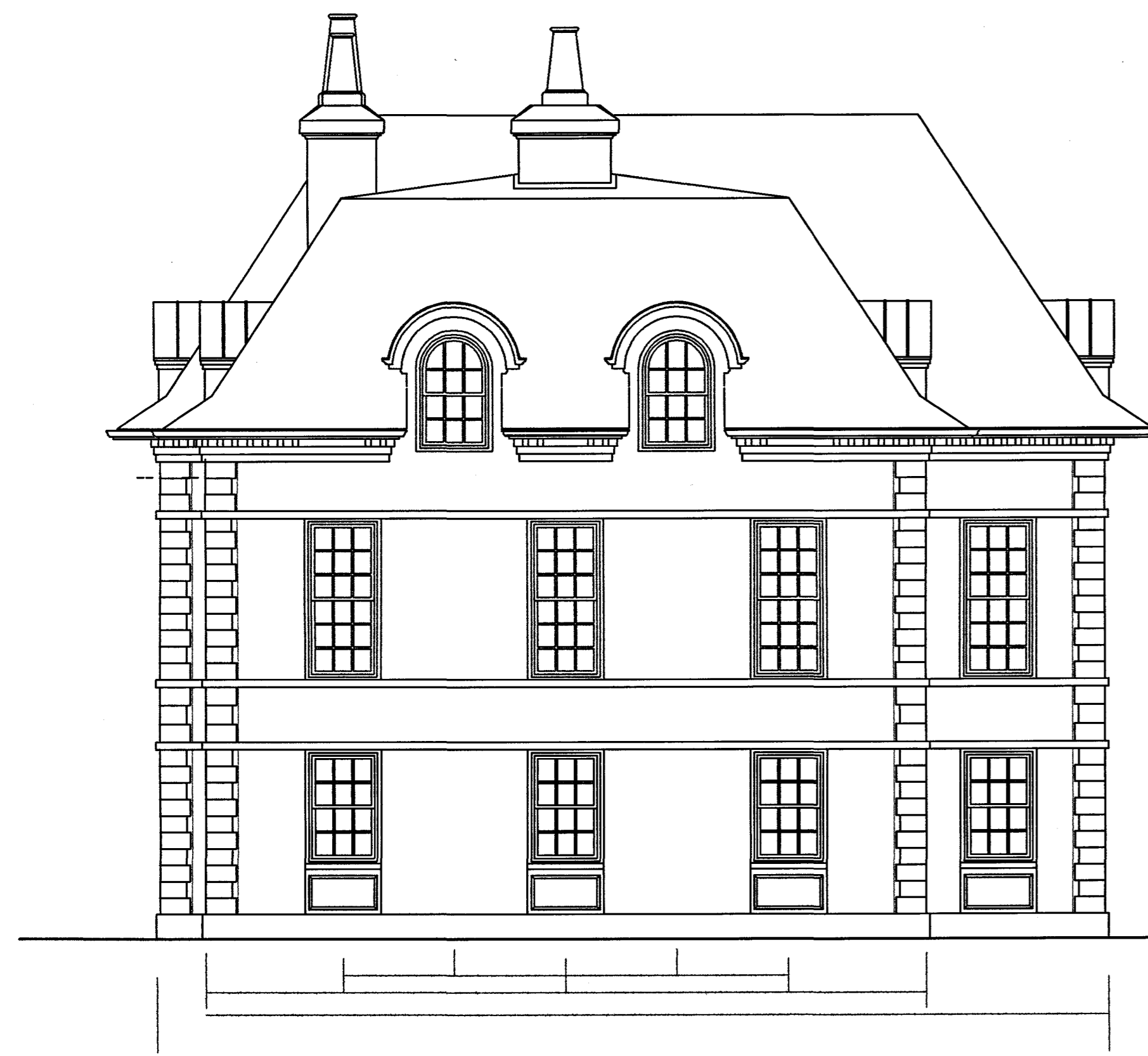
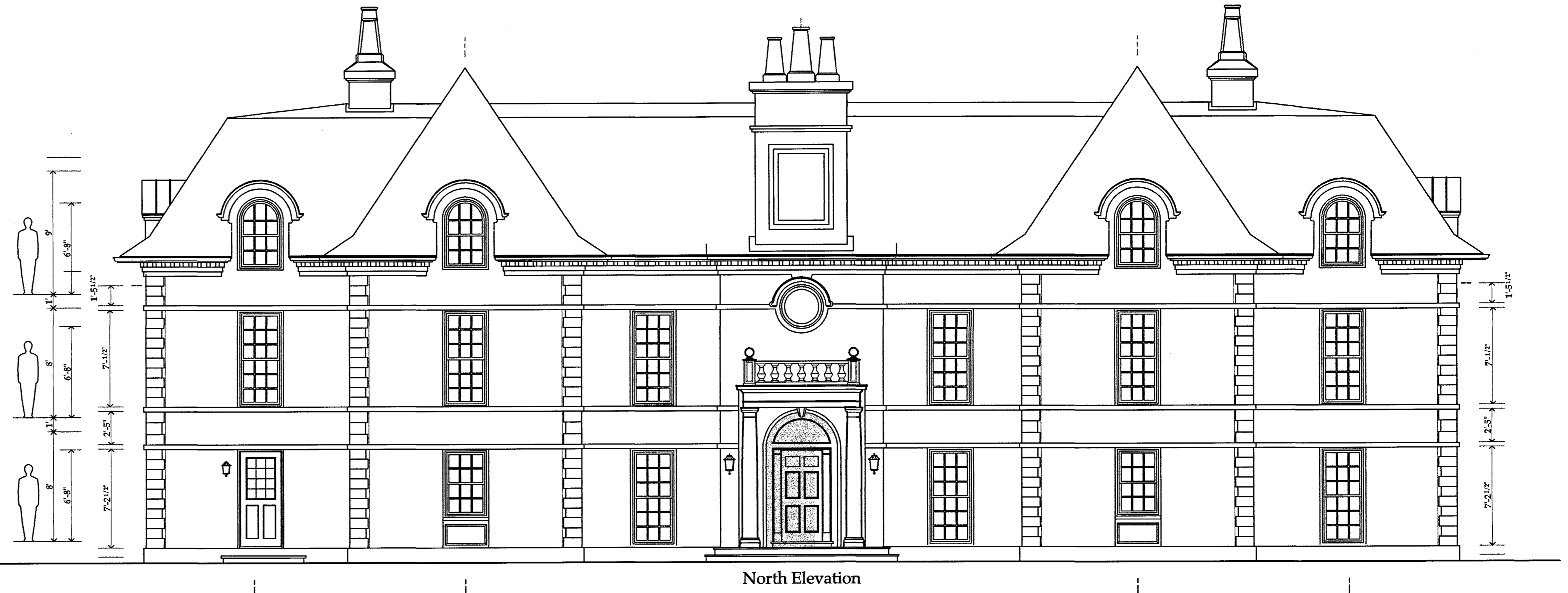
West Elevation

Knee wall 9" lower



South Elevation

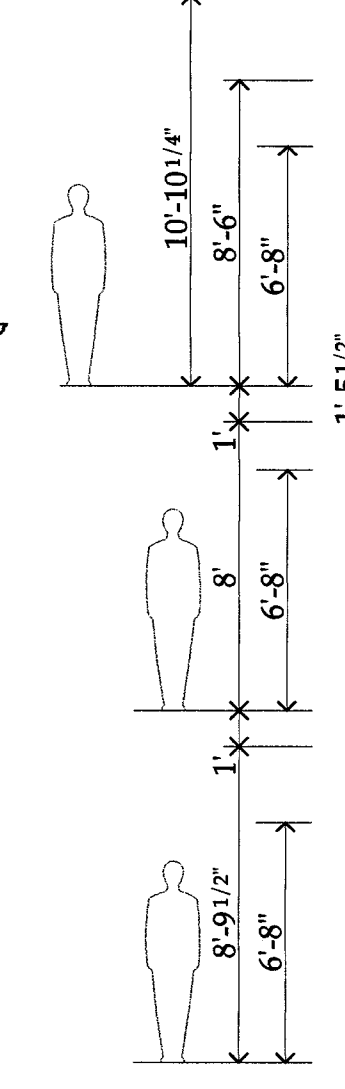
CASSETTA RESIDENCE



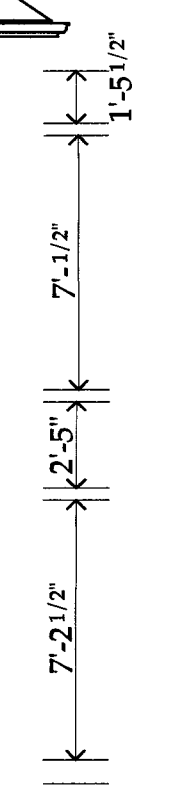


East Elevation

Roof 1' lower
& Knee wall 9" lower

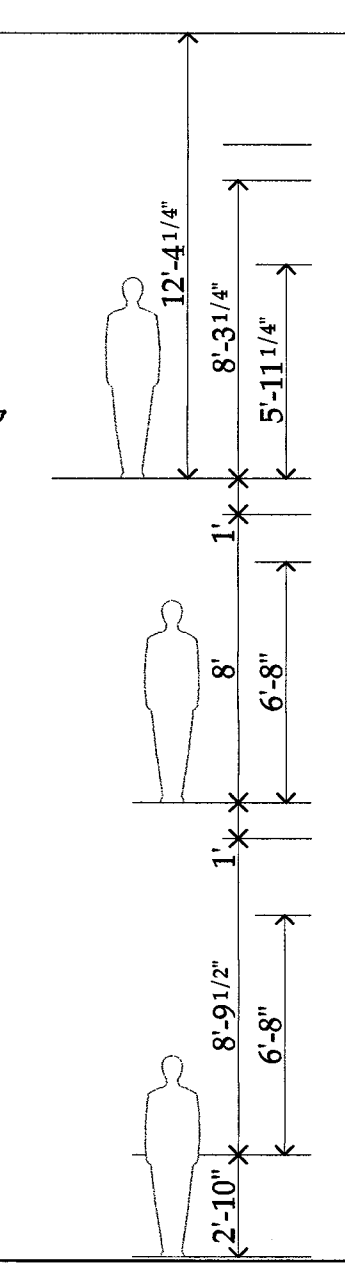


North Elevation



West Elevation

Knee wall 9" lower



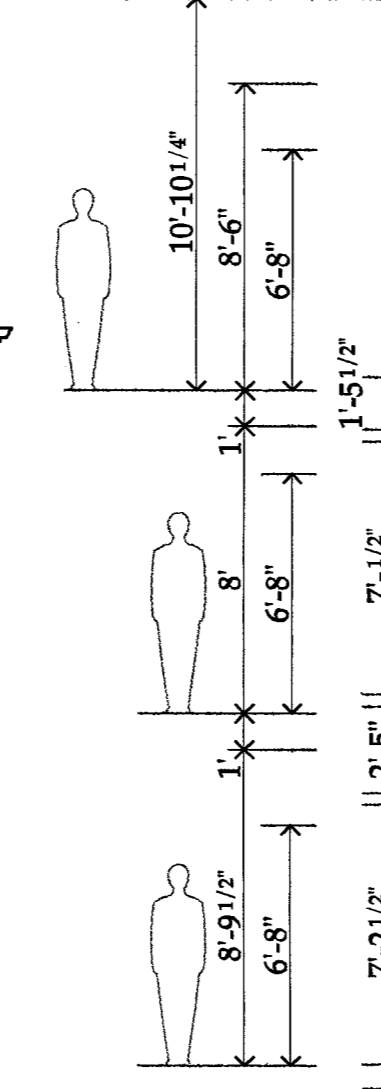
South Elevation

CASSETTA RESIDENCE

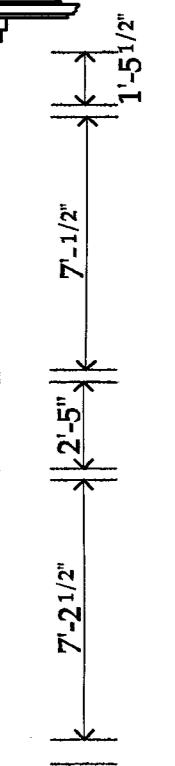


East Elevation

Roof 1' lower
& Knee wall 9" lower

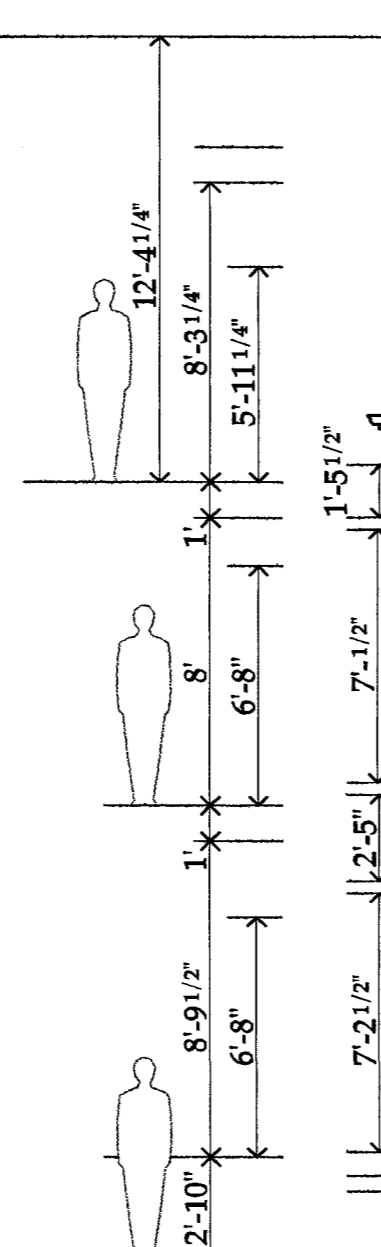


North Elevation



West Elevation

Knee wall 9" lower

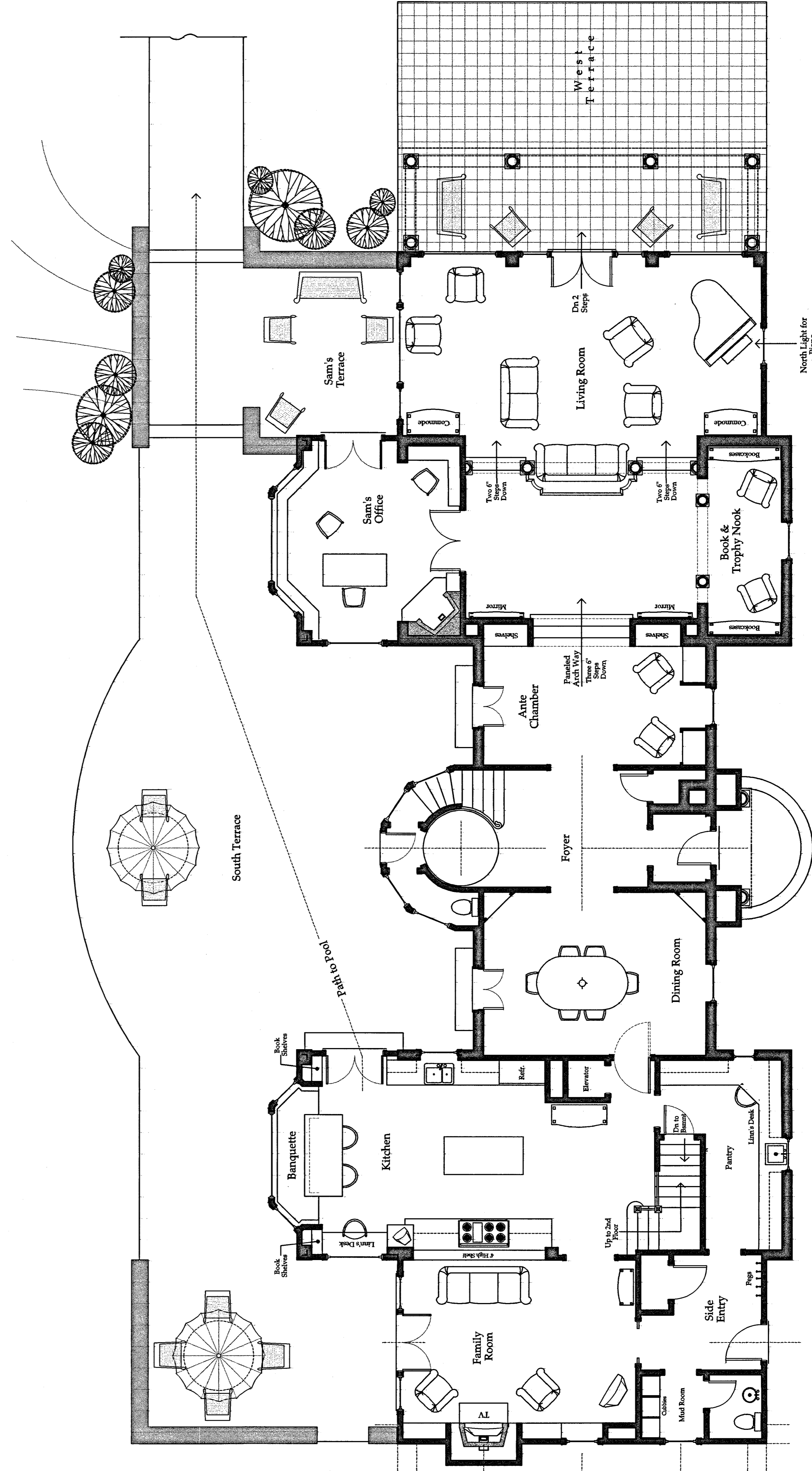
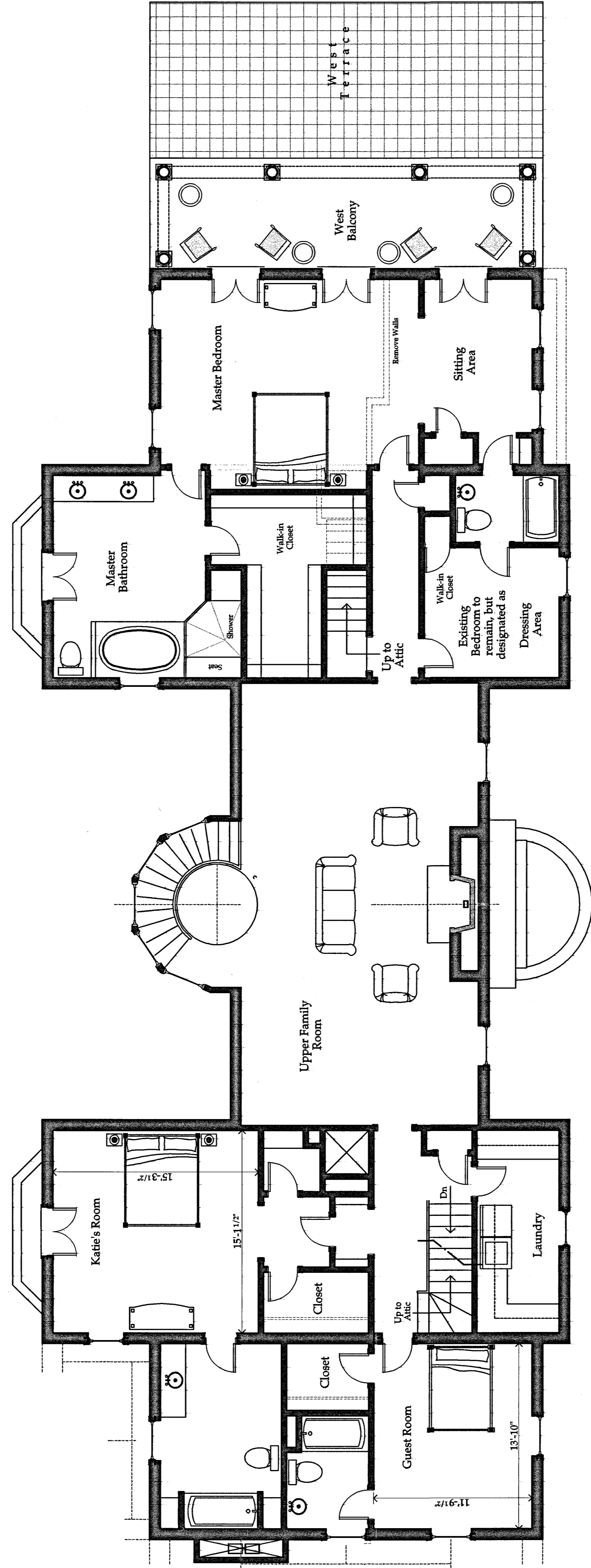
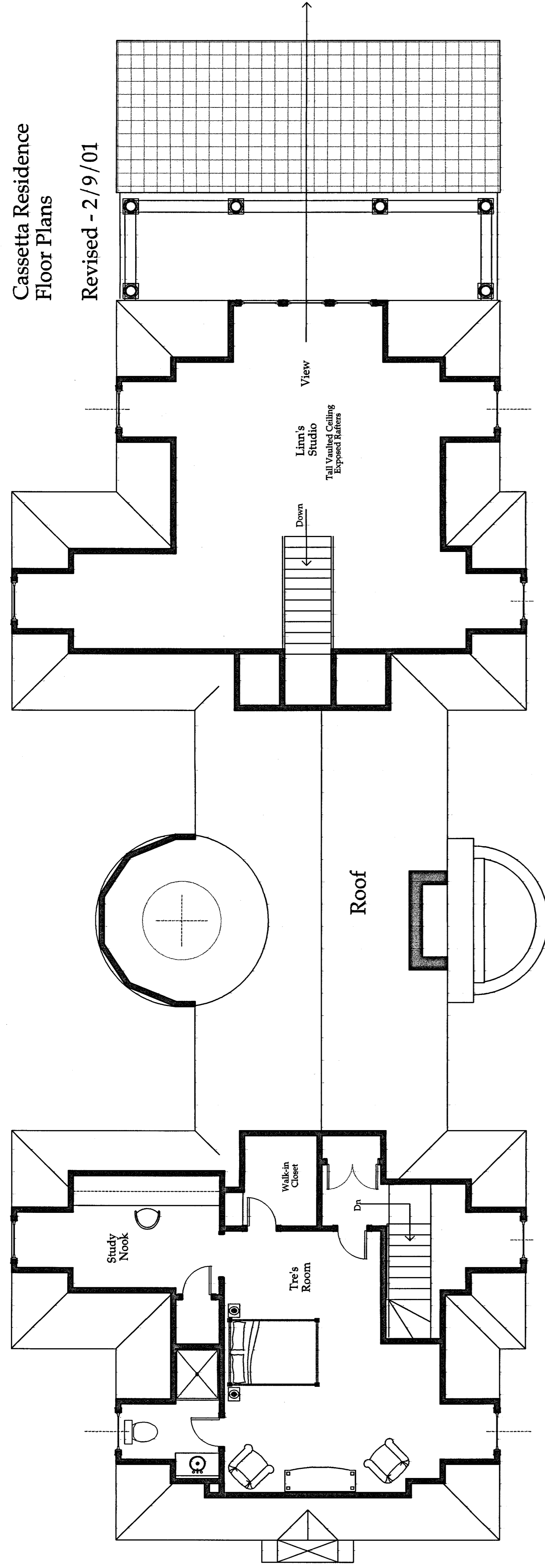


South Elevation

CASSETTA RESIDENCE

Cassetta Residence
Floor Plans

Revised - 2/9/01

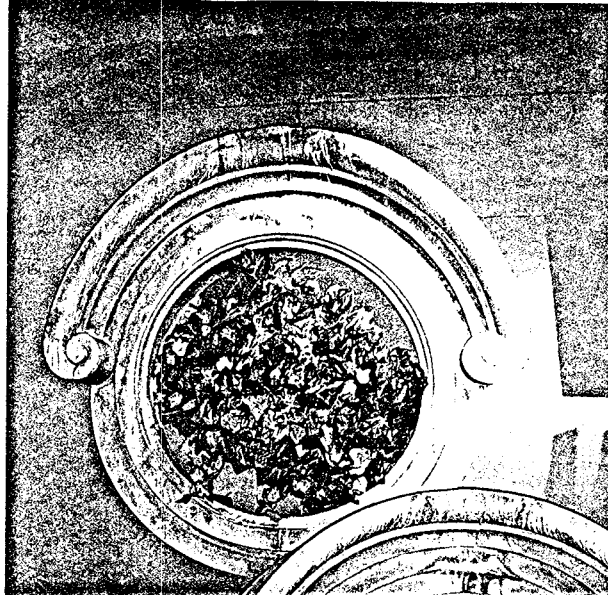
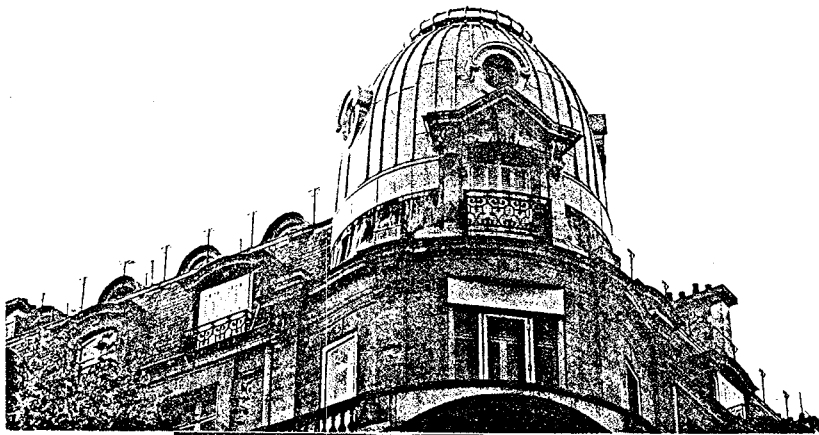
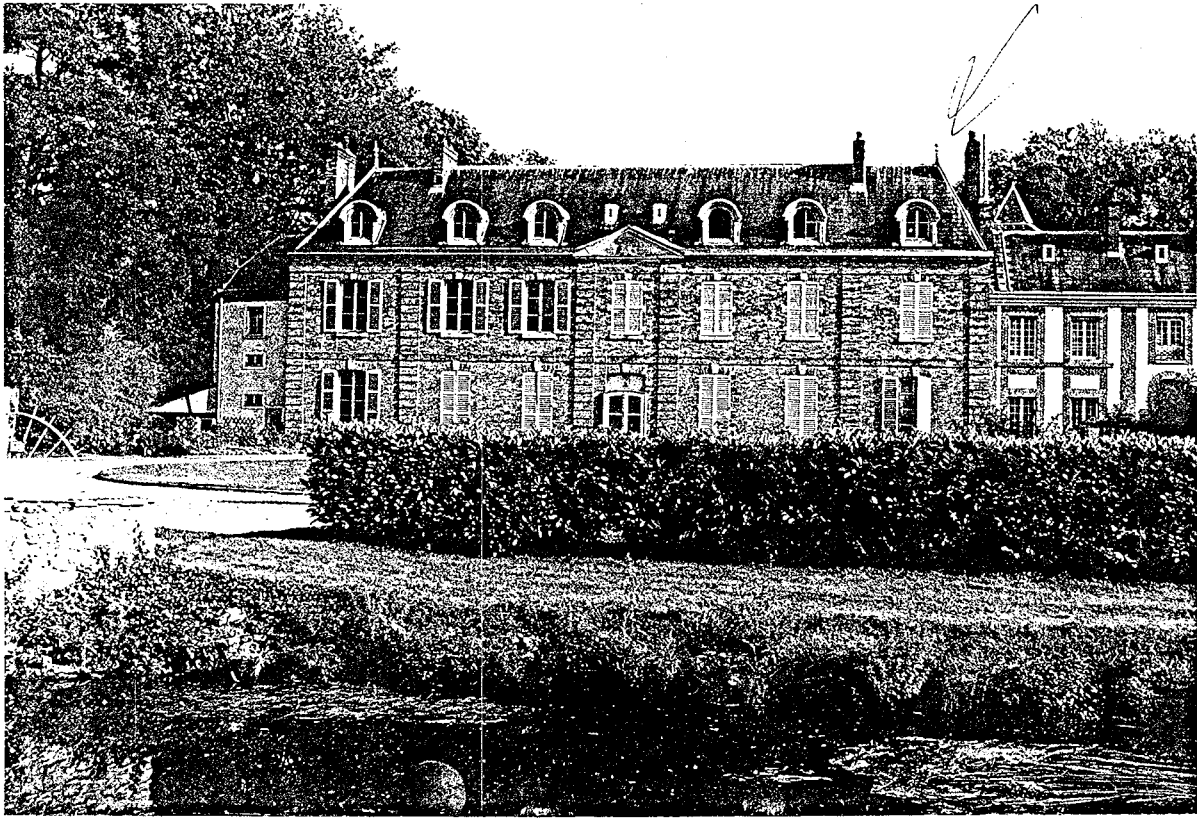


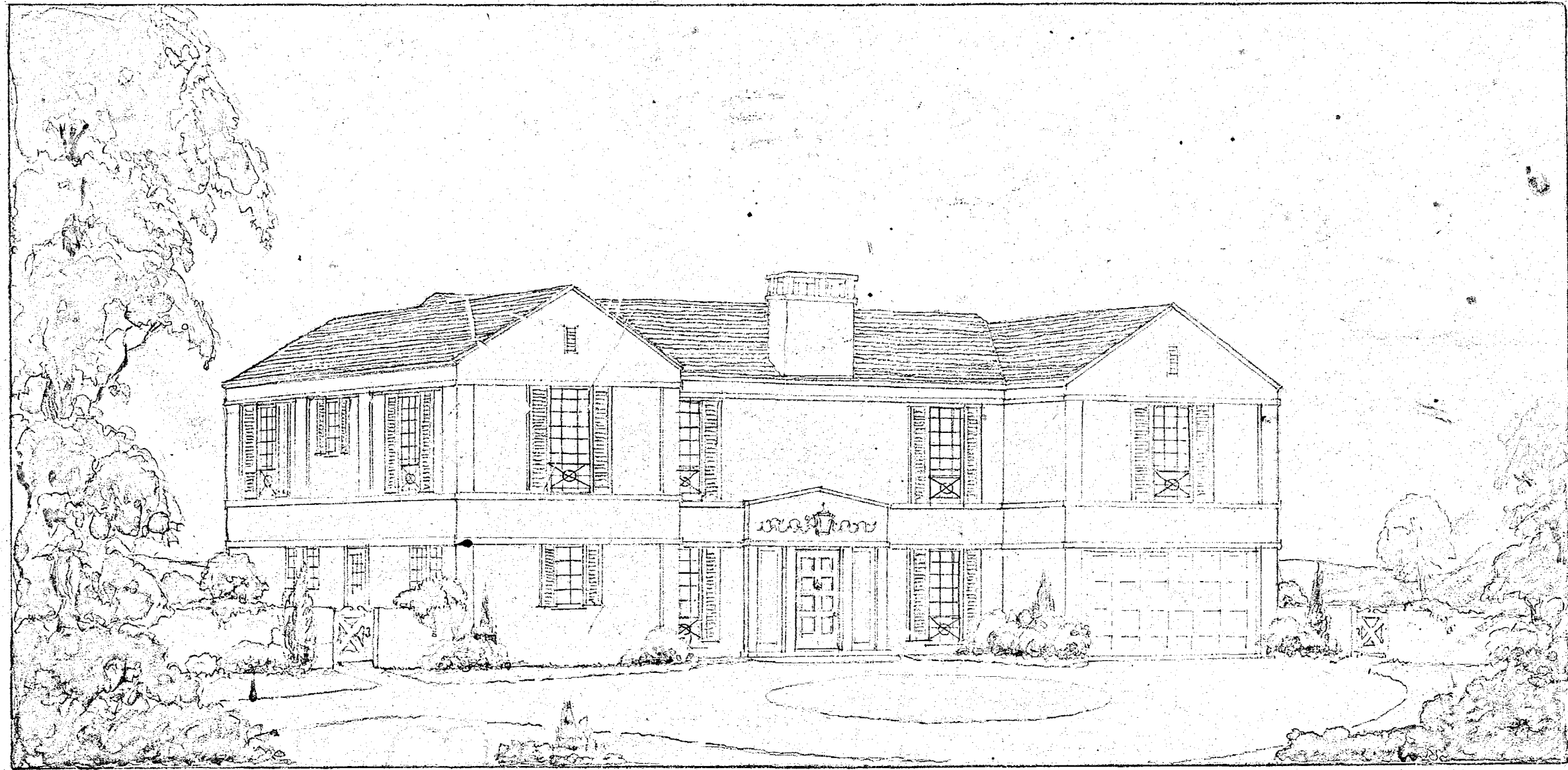


SIDE ELEVATION



FRONT ELEVATION

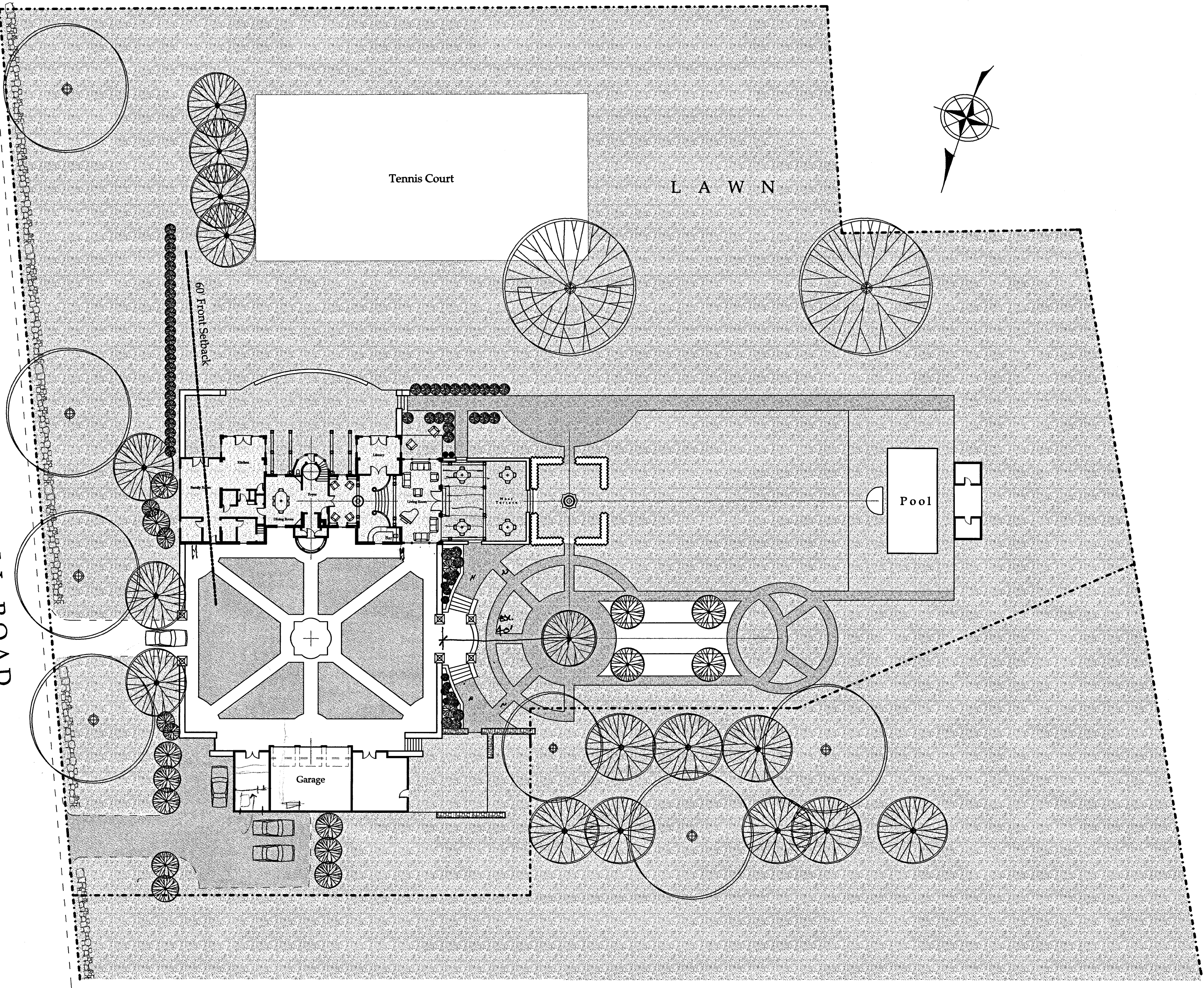




Edwin L. Howard, Architect
101 Park Avenue
New York City

House for
Miss Caroline Florence Lexow
Greenfield Hill, Fairfield, Connecticut

MINE HILL ROAD



Tennis Court

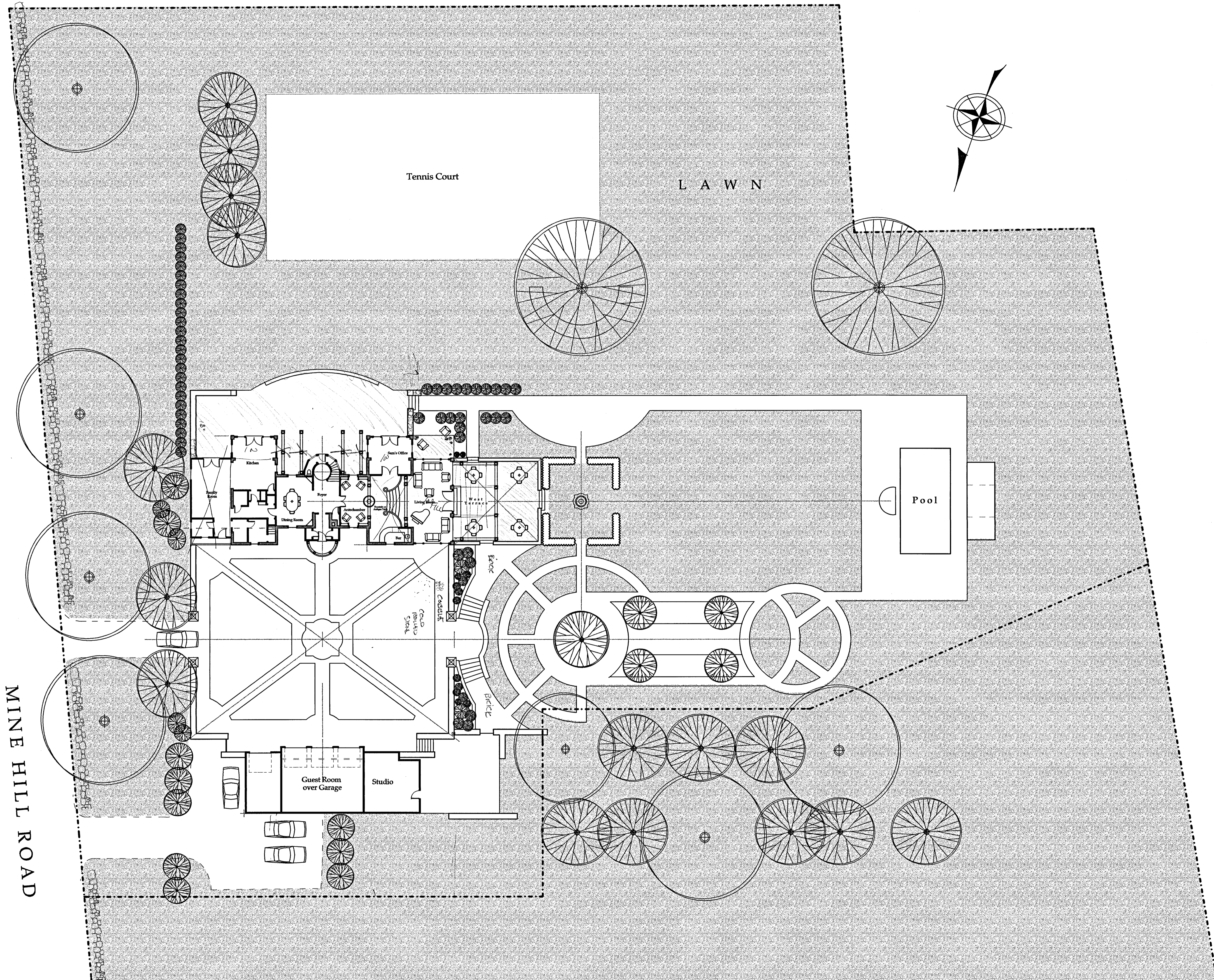
L A W N

Pool

Garage

60' Front Setback

MINE HILL ROAD



Tennis Court

L A W N

Pool

Guest Room
over Garage

Studio

Bar

Dining Room

Kitchen

Foyer

Living Room

Bar

Bar

Bar

Bar

Bar

Pool
casual

Pool
casual

Pool
casual

Pool
casual

Pool
casual

Pool
casual

Pool
casual

Pool
casual

Pool
casual

Pool
casual

Pool
casual

Pool
casual

Pool
casual

Pool
casual

Pool
casual

Pool
casual

Pool
casual

Pool
casual

Pool
casual

Pool
casual

Pool
casual

Pool
casual

Pool
casual

Pool
casual

Pool
casual

Pool
casual

Pool
casual

Pool
casual

Pool
casual

Pool
casual

Pool
casual

Pool
casual

Pool
casual

Pool
casual

Pool
casual

Pool
casual

Pool
casual

Pool
casual

Pool
casual

Pool
casual

Pool
casual

Pool
casual

Pool
casual

Pool
casual

Pool
casual

Pool
casual

Pool
casual

Pool
casual

Pool
casual

Pool
casual

Pool
casual

Pool
casual

Pool
casual

Pool
casual

Pool
casual

Pool
casual

Pool
casual

Pool
casual

Pool
casual

Pool
casual

Pool
casual

Pool
casual

Pool
casual

Pool
casual

Pool
casual

Pool
casual

Pool
casual

Pool
casual

Pool
casual

Pool
casual

Pool
casual

Pool
casual

Pool
casual

Pool
casual

Pool
casual

Pool
casual

Pool
casual

Pool
casual

Pool
casual

Pool
casual

Pool
casual

Pool
casual

Pool
casual

Pool
casual

Pool
casual

Pool
casual

Pool
casual

Pool
casual

Pool
casual

Pool
casual

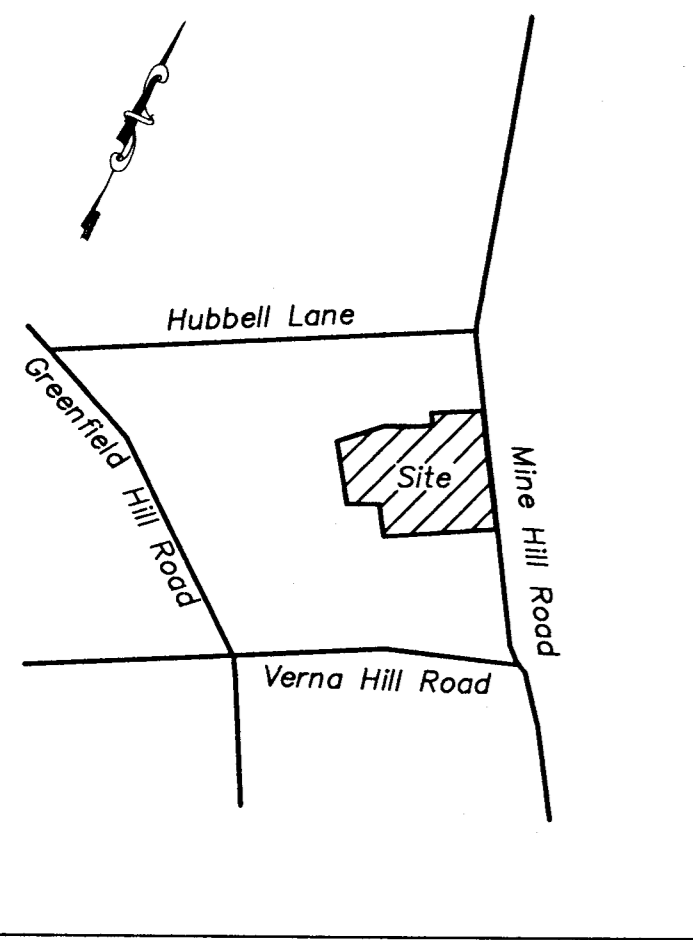
Pool
casual

Pool
casual

Pool
casual

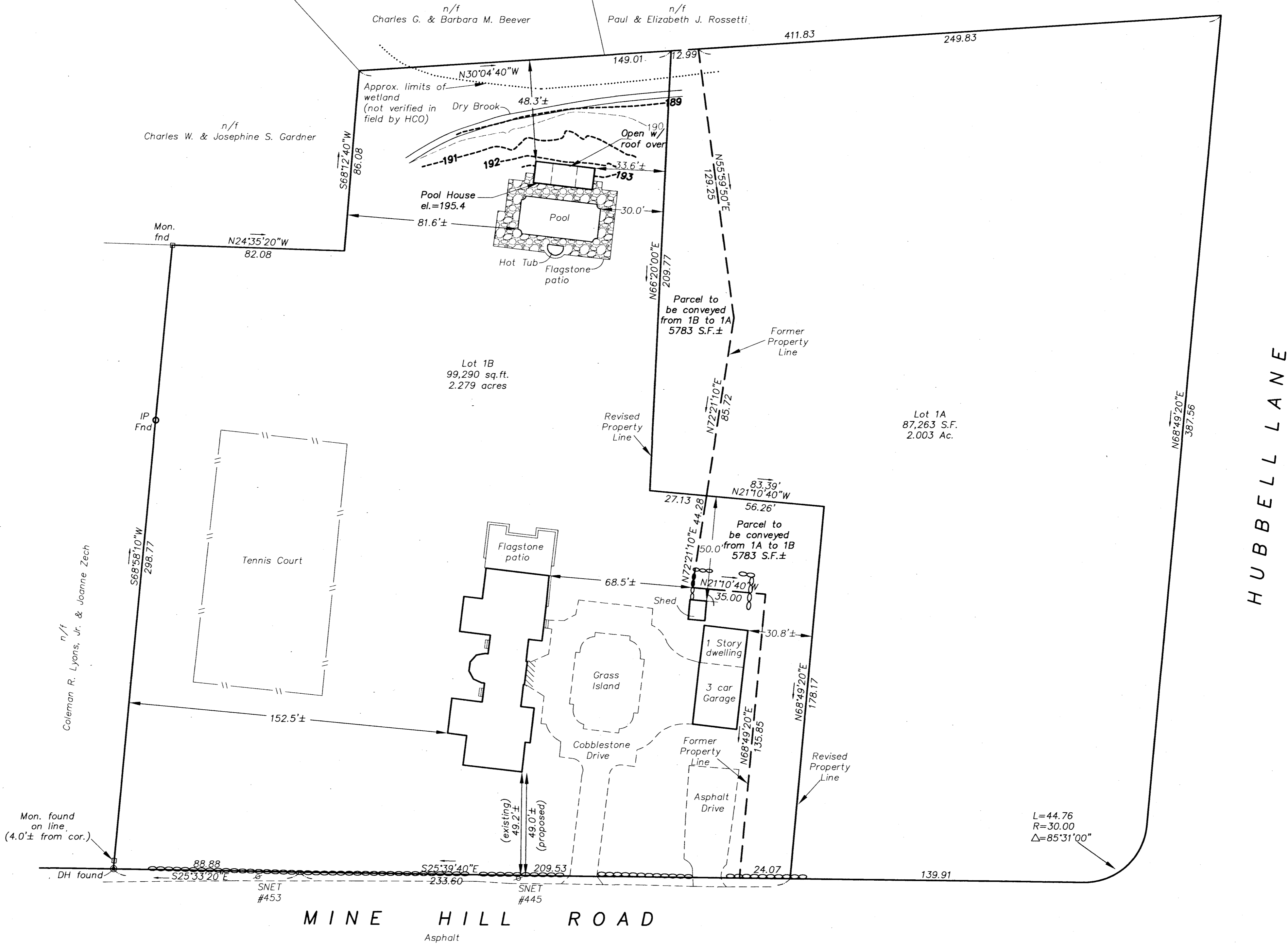
Pool
casual

Pool
casual



Key Map
Scale: 1"=500'

- Notes:**
- I hereby declare to the best of my information, knowledge, and belief that this map has been prepared pursuant to the regulations of Connecticut State Agencies sections 20-300b-1 through 20-300b-20 and "The standards for surveys and maps in the state of Connecticut" as adopted by the Connecticut Association of Land Surveyors, Inc. on September 26, 1996. The type of survey performed was a Property Survey intended to be used for lot line revision purposes. This map conforms to the standards of a class A-2 survey.
 - Reference is hereby made to the following on file in the Fairfield Town Clerk's Office
Resubdivision of Lot 1 on a map entitled "Subdivision for Caroline Florence Lexow, est., Fairfield, Conn.," June 4, 1962
"Resubdivision for John A. and Adele L. McKenna, Fairfield, Conn.," Dated April 6, 1972
 - Location of underground utilities are unknown.
 - Reference is hereby made to Connecticut General Statute 8-13a, as amended, with regards to existing structures three or more years old.
 - Property is in Fairfield Residence Zone AAA.



To the best of my knowledge and belief, this map is substantially correct as noted herein.

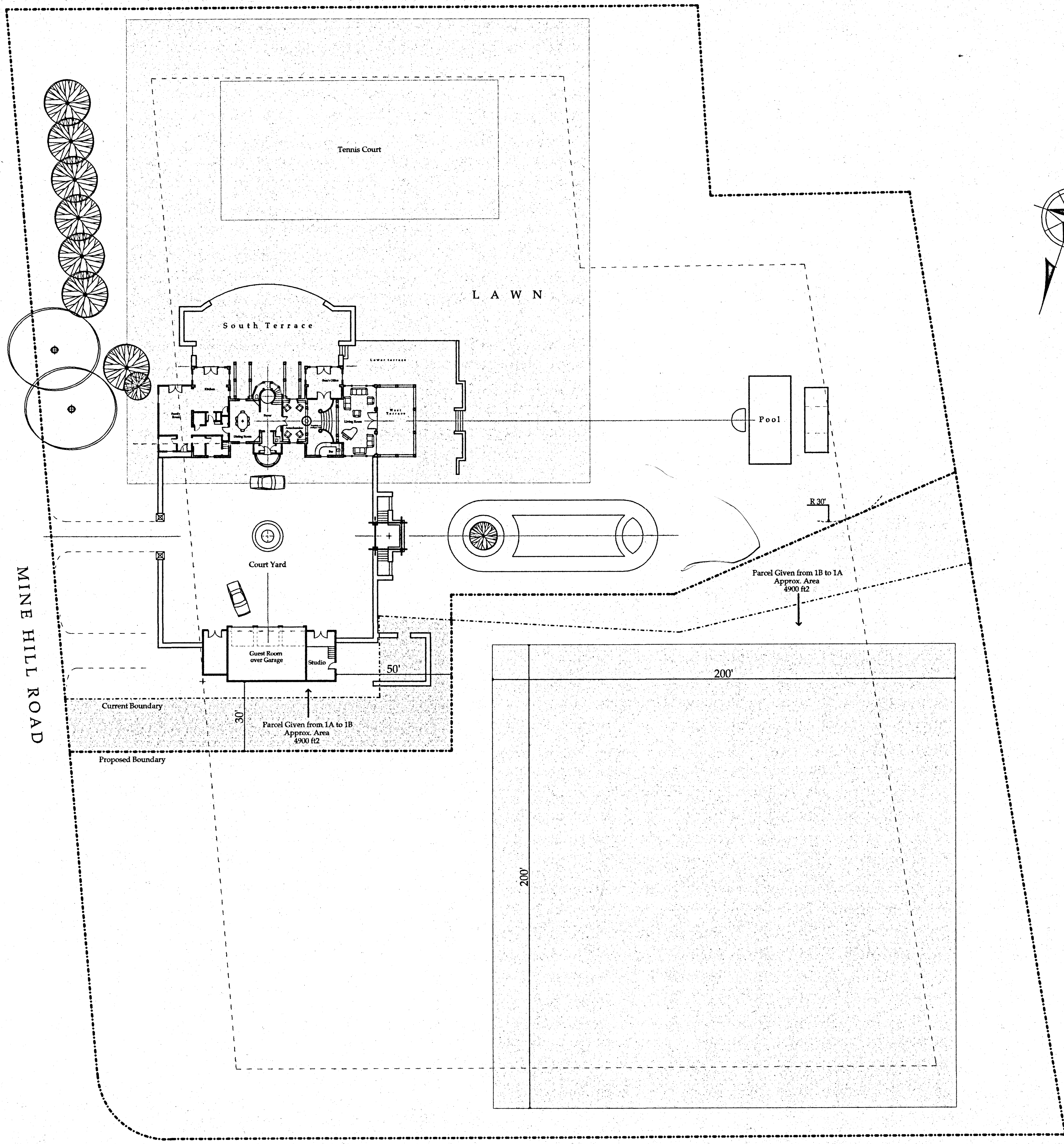
Charles S. Spahr Sr.
Charles S. Spahr Sr.
L.S. #176

This document and copies hereof are valid only if they bear the signature and embossed seal of the designated licensed professional. Unauthorized alterations render any declaration null and void.

PROPERTY SURVEY
SHOWING REVISION OF LOT LINES PREPARED FOR
LINN M. & SEBASTIAN CASSETTA
FAIRFIELD, CONNECTICUT, NOVEMBER 7, 2000

THE HUNTINGTON COMPANY, LLC
ENGINEERS & SURVEYORS
FAIRFIELD CONNECTICUT

G:\projects\dwg\7100\dwg\7100-revised\PL-15.dwg Tue Nov 17 15:12:13 2009 0/5



Additions & Alterations to the
Cassetta Residence

Proposed Site Plan

1" = 30'

Prepared on 8/26/00

by:
 Joseph Matto Architects - AIA
 Ct Registration #8440

37 Geneva Road
 Norwalk, Ct.
 203 866-5777

For:
 Sam & Linn Cassetta
 Mine Hill Road
 Fairfield, Ct

This Site Plan taken after A-2 Survey prepared by
 The Huntington Co, LLC