



Front Elevation



South Elevation



East Elevation



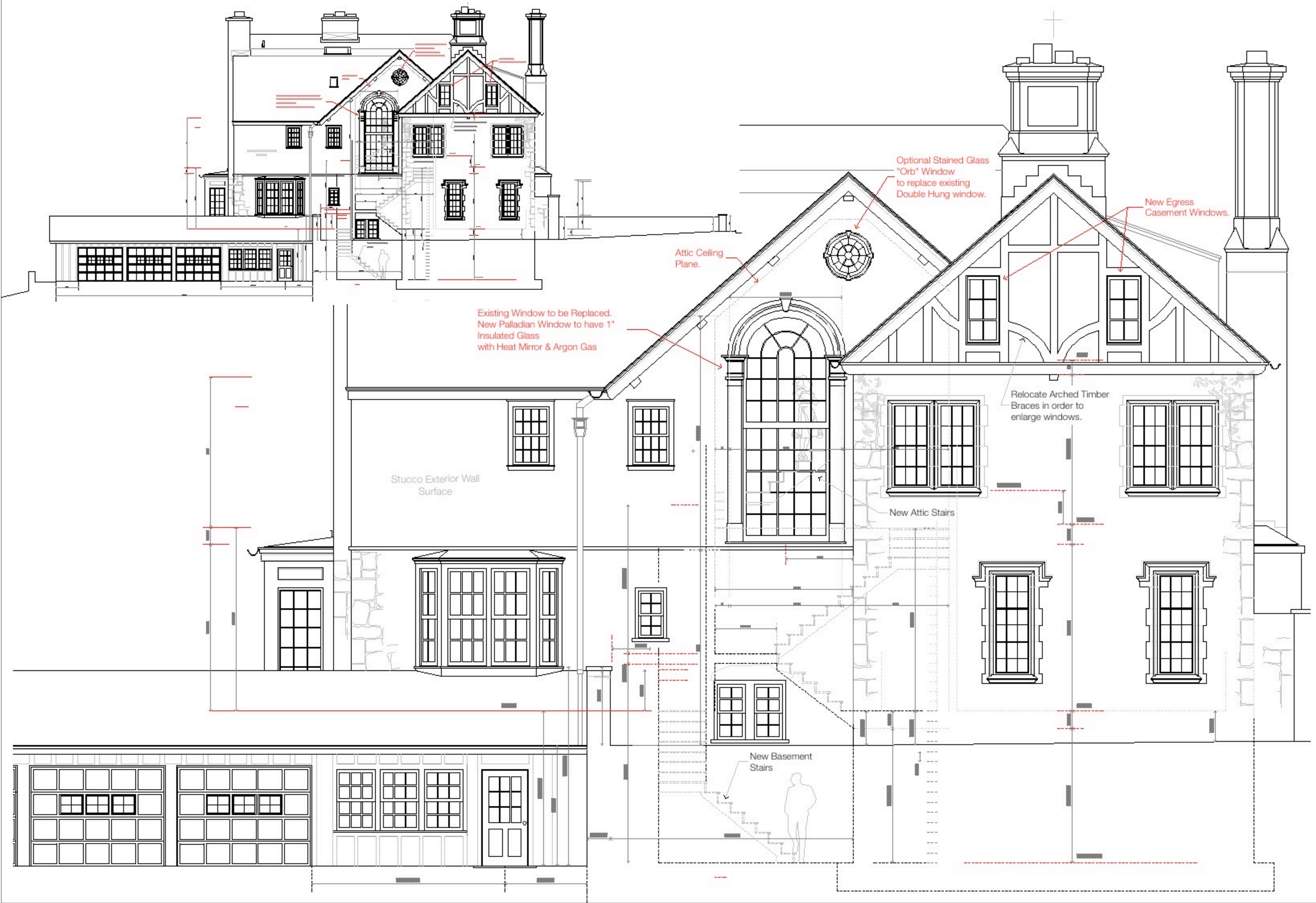
Issue Date  
10/00/09

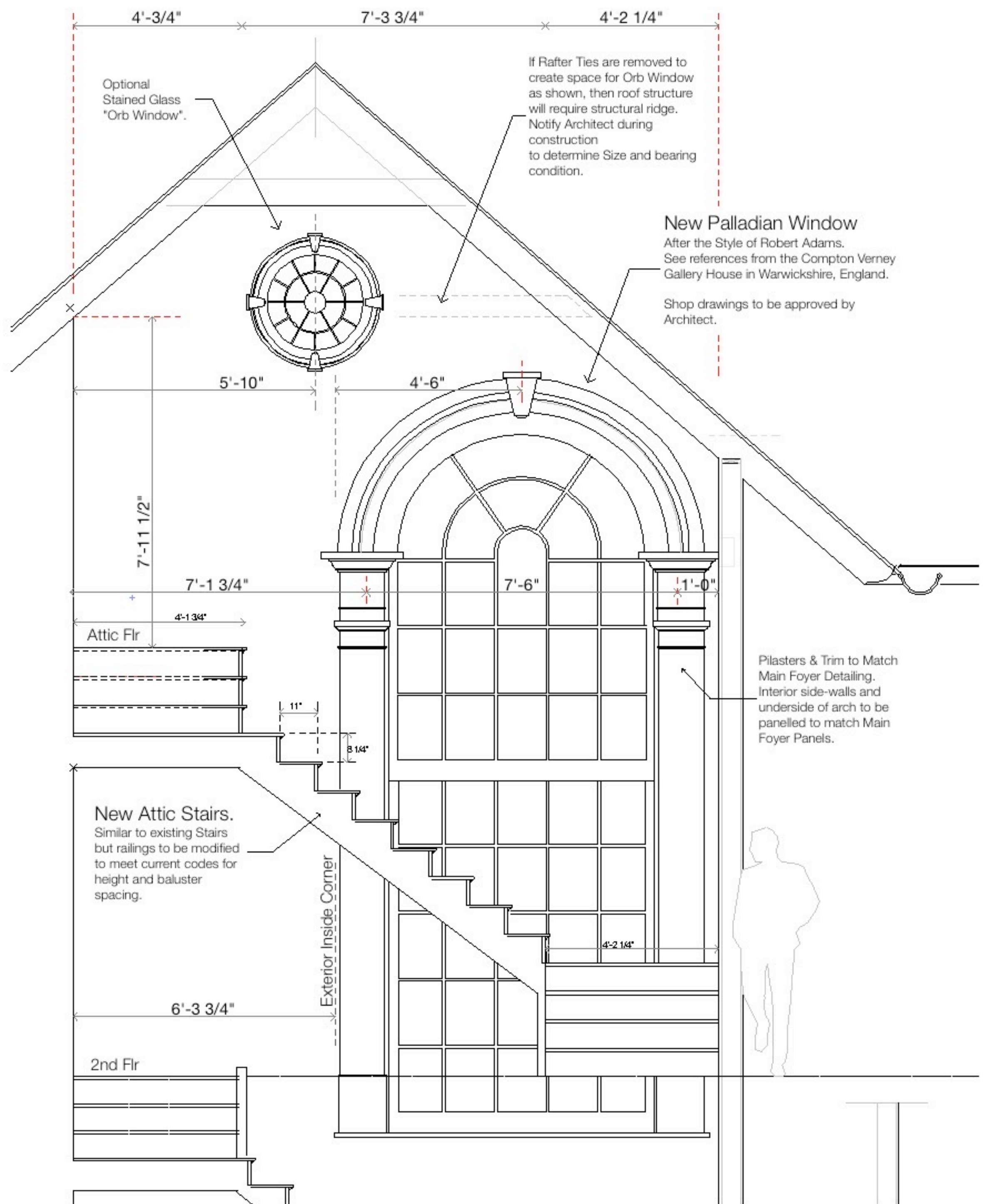
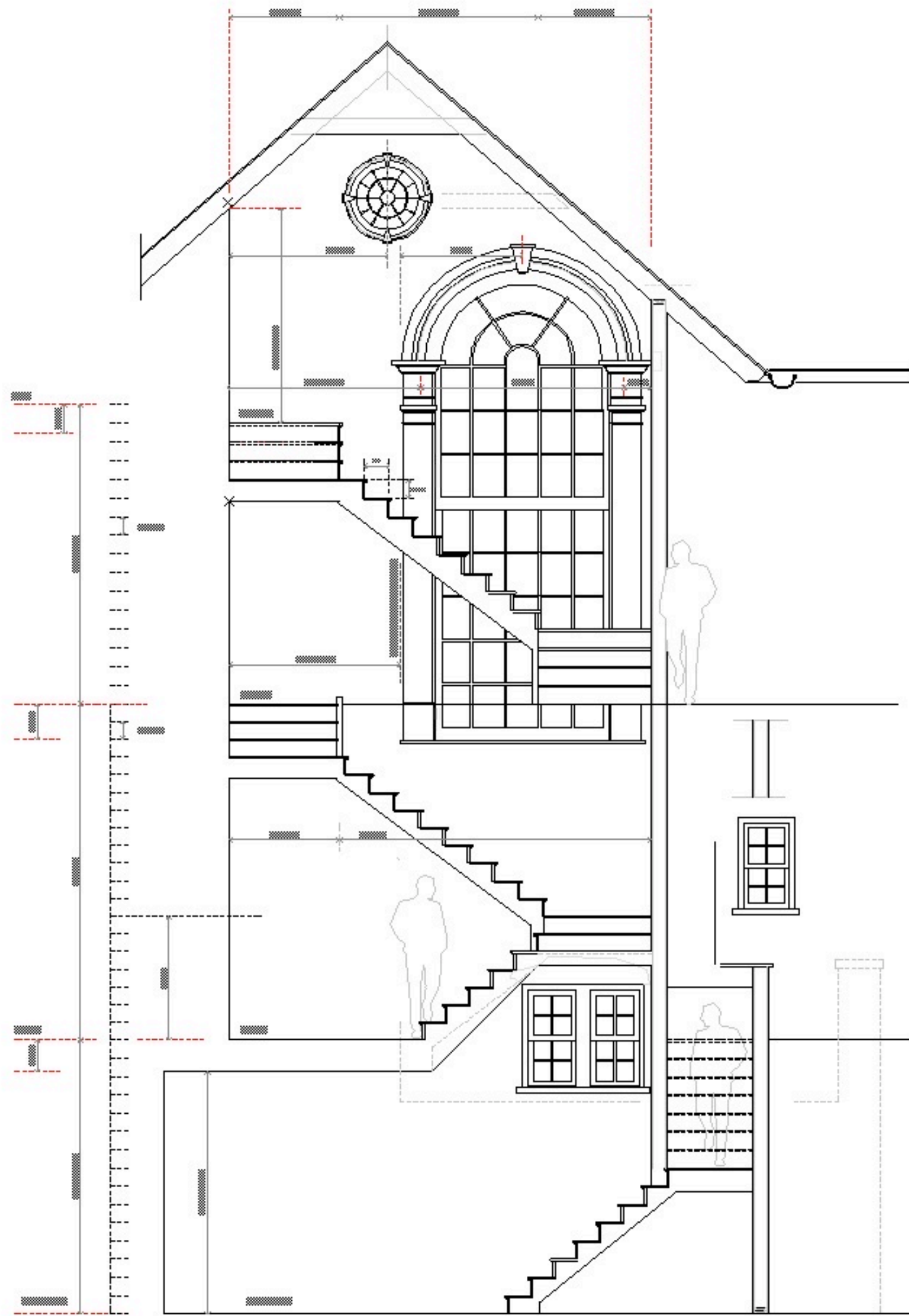
West, South & East Elevations

Scale (s)

Joseph Marro Architect AIA  
Charlie S. Craig Family

Page  
A-05





Issue Date  
10/02/09

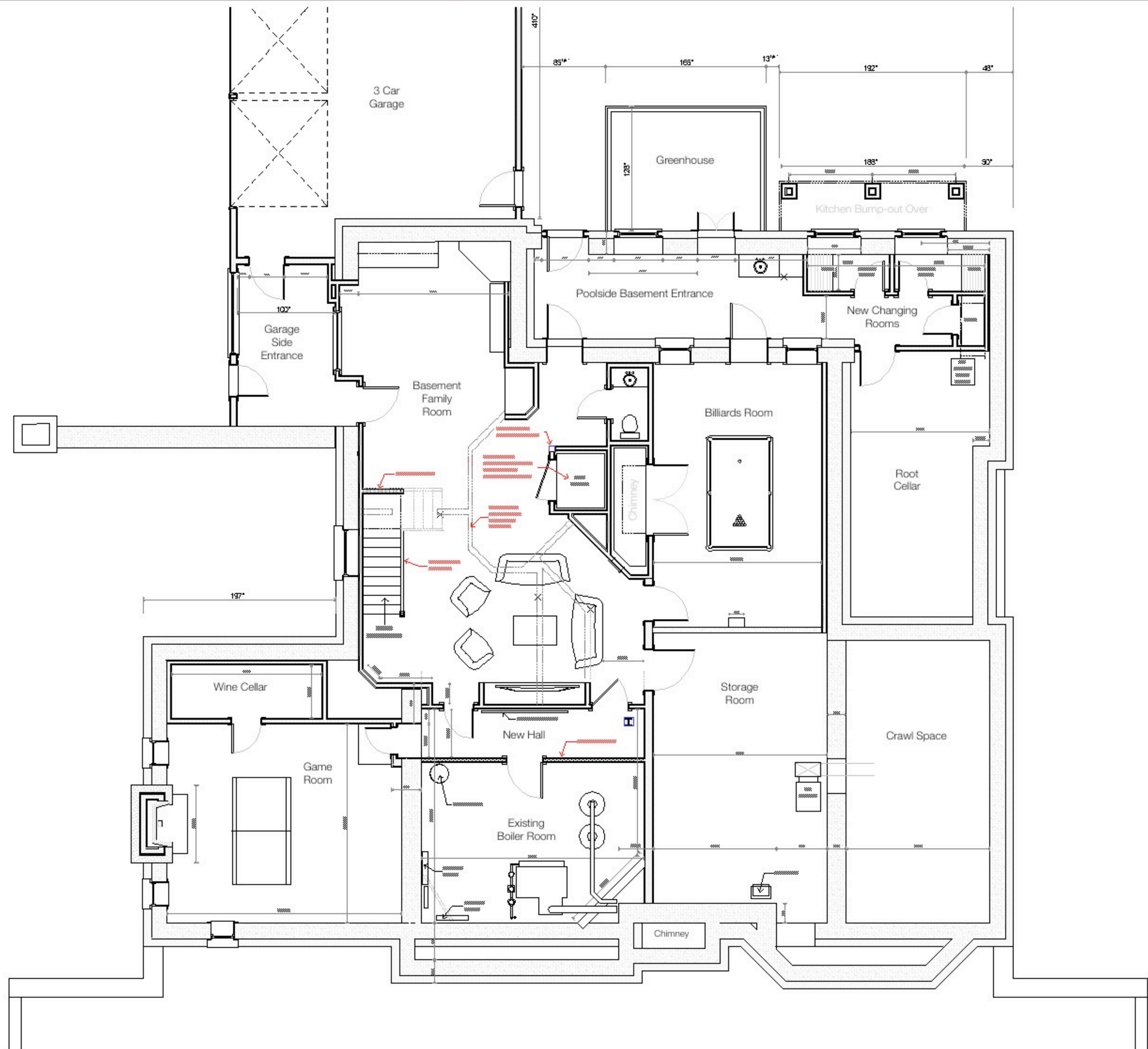
Stair Section

Scale (s)



Joseph Matto Architect AIA  
Charlie S. Craig Family

Page  
A-07



Issue Date  
10/00/09

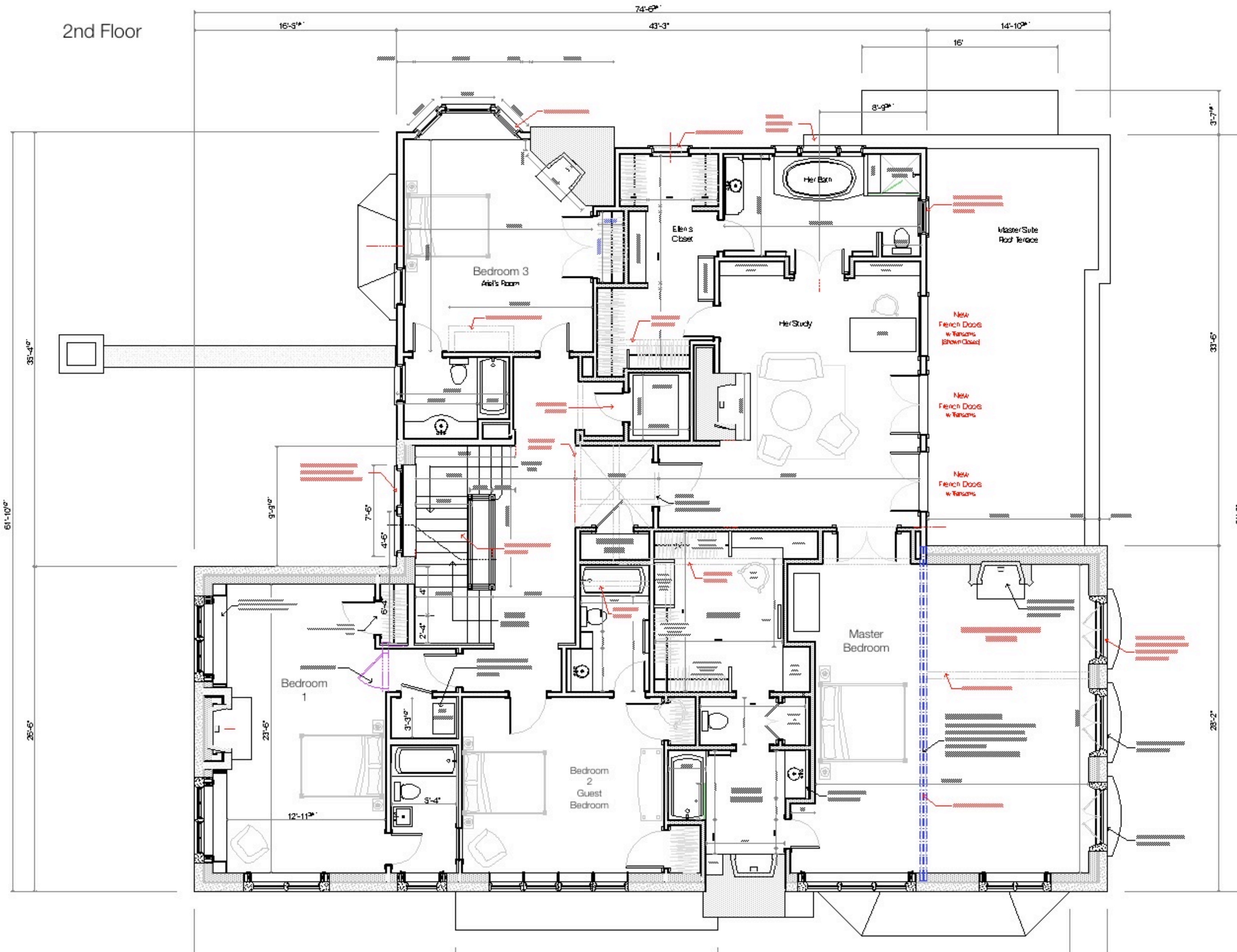
Basement Plan

Scale (s)

Joseph Matto Architect AIA  
Charlie S. Craig Family

Page  
A-01

2nd Floor



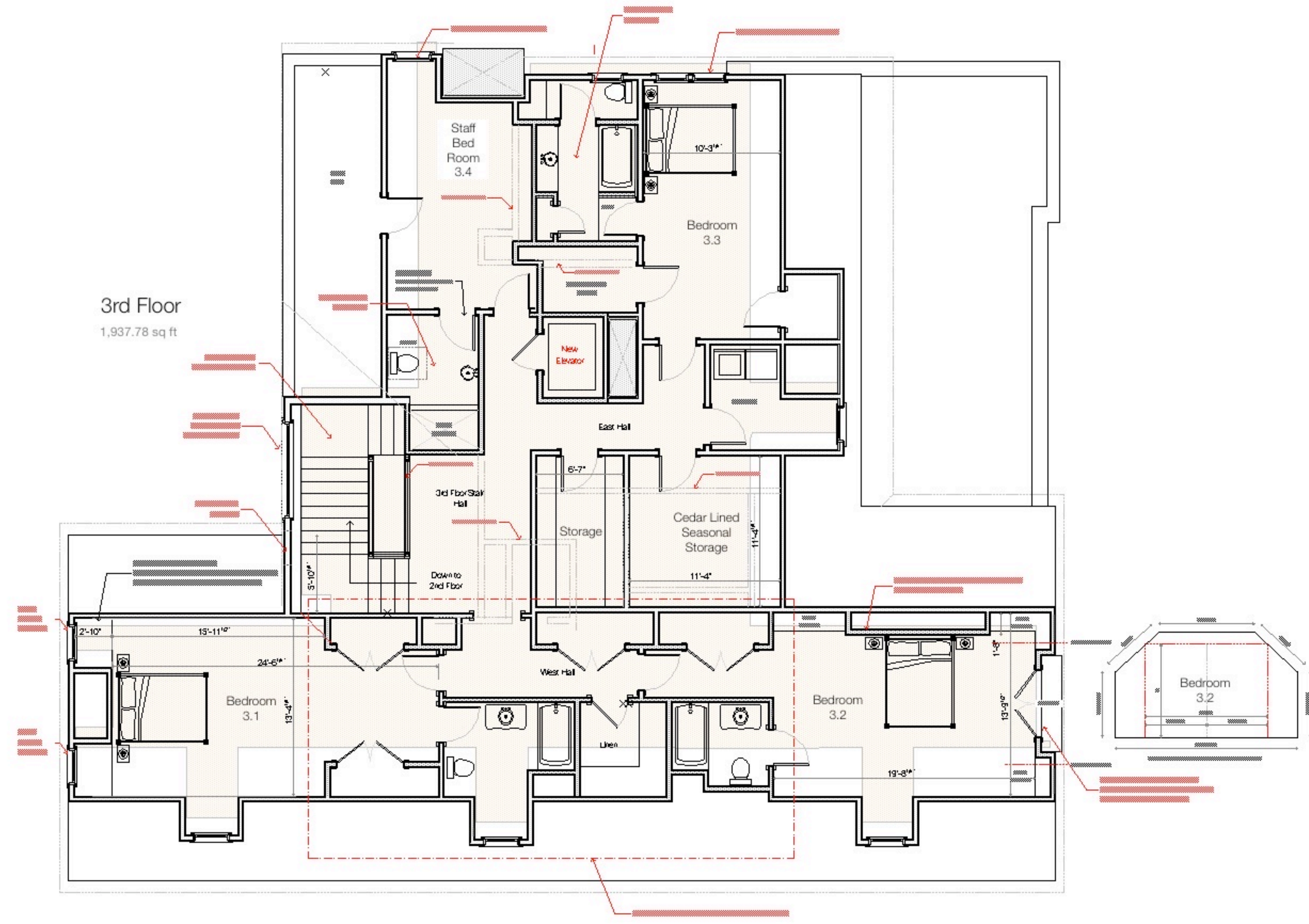
Issue Date  
10/00/09

2nd Floor

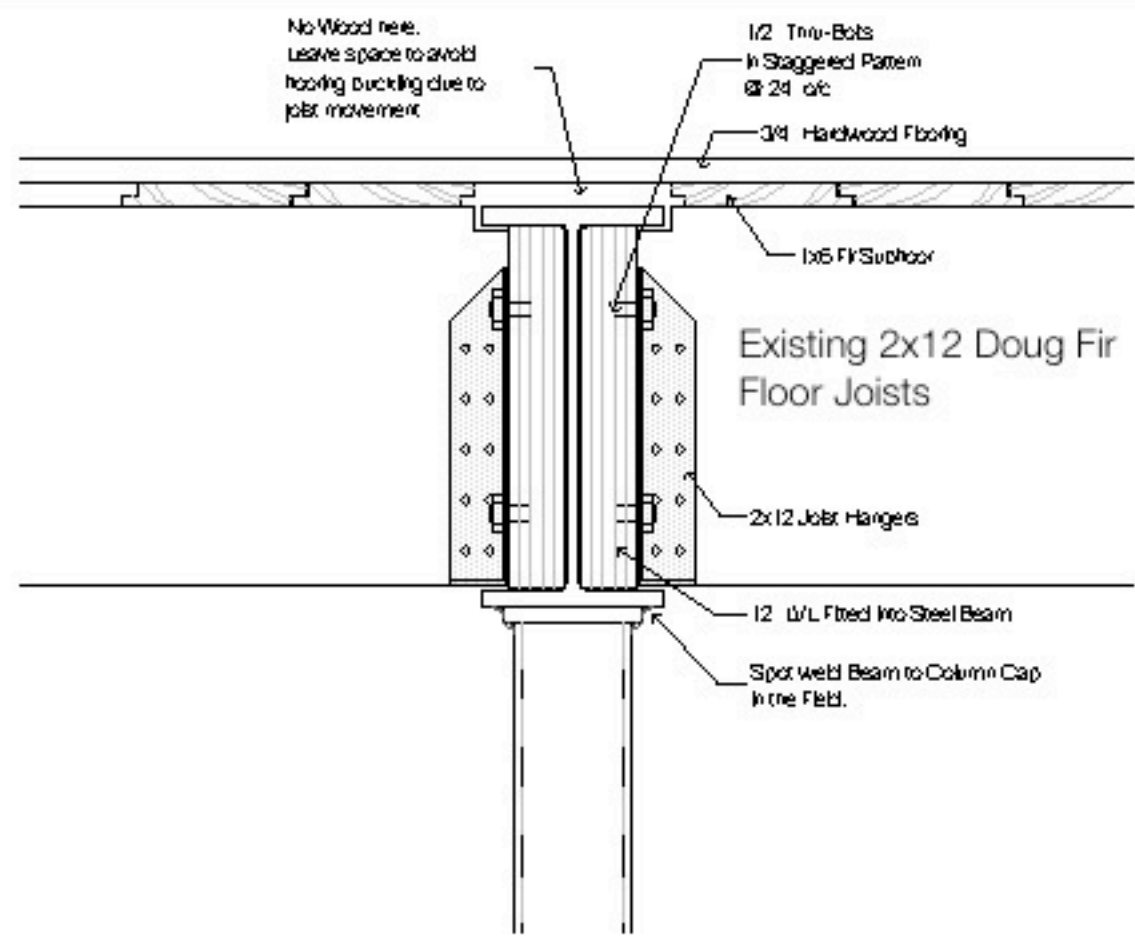
Scale (s)

Joseph Marro Architect AIA  
Charlie S. Craig Family

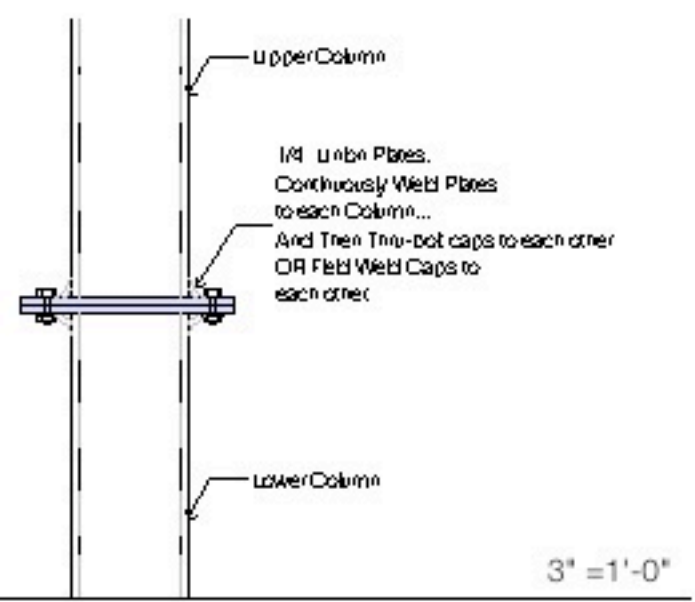
Page  
A-03



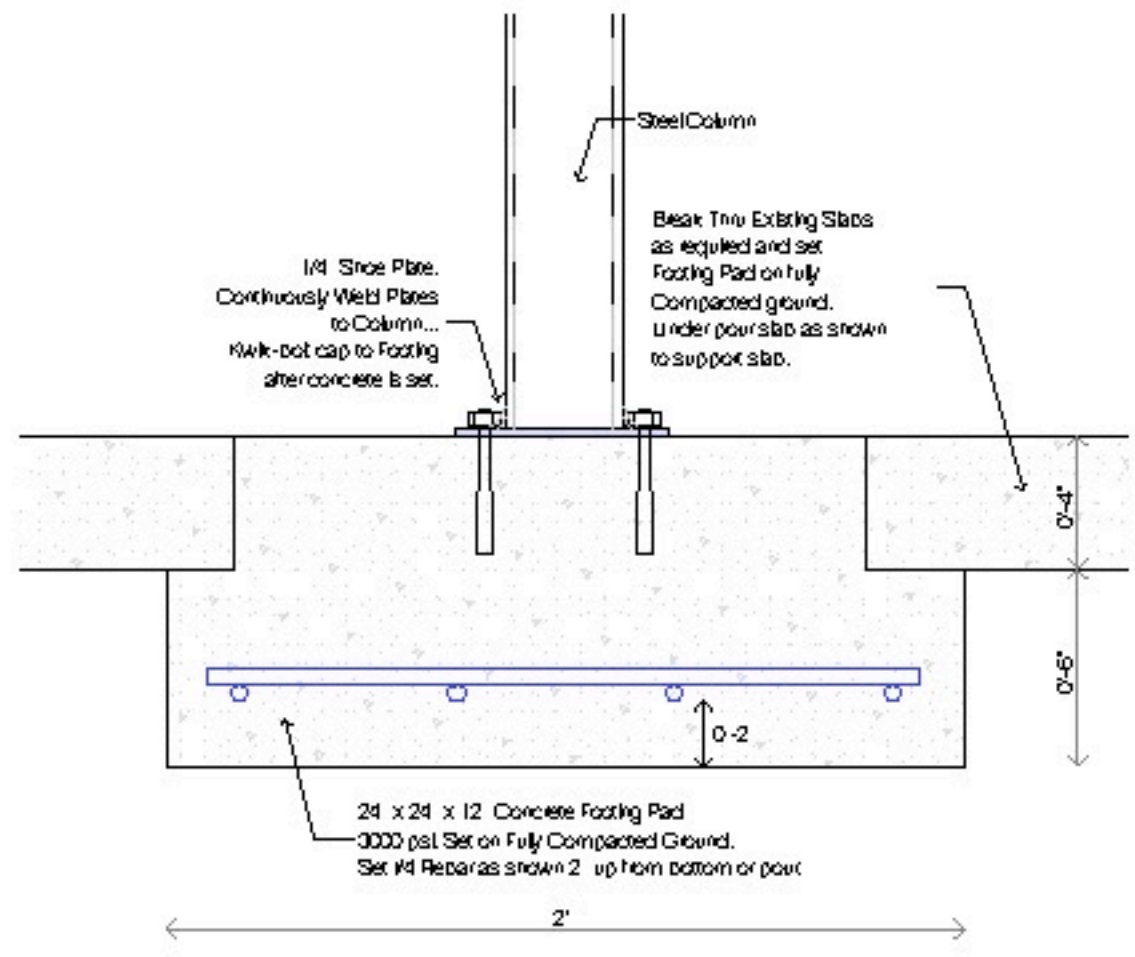
3rd Floor  
1,937.78 sq ft



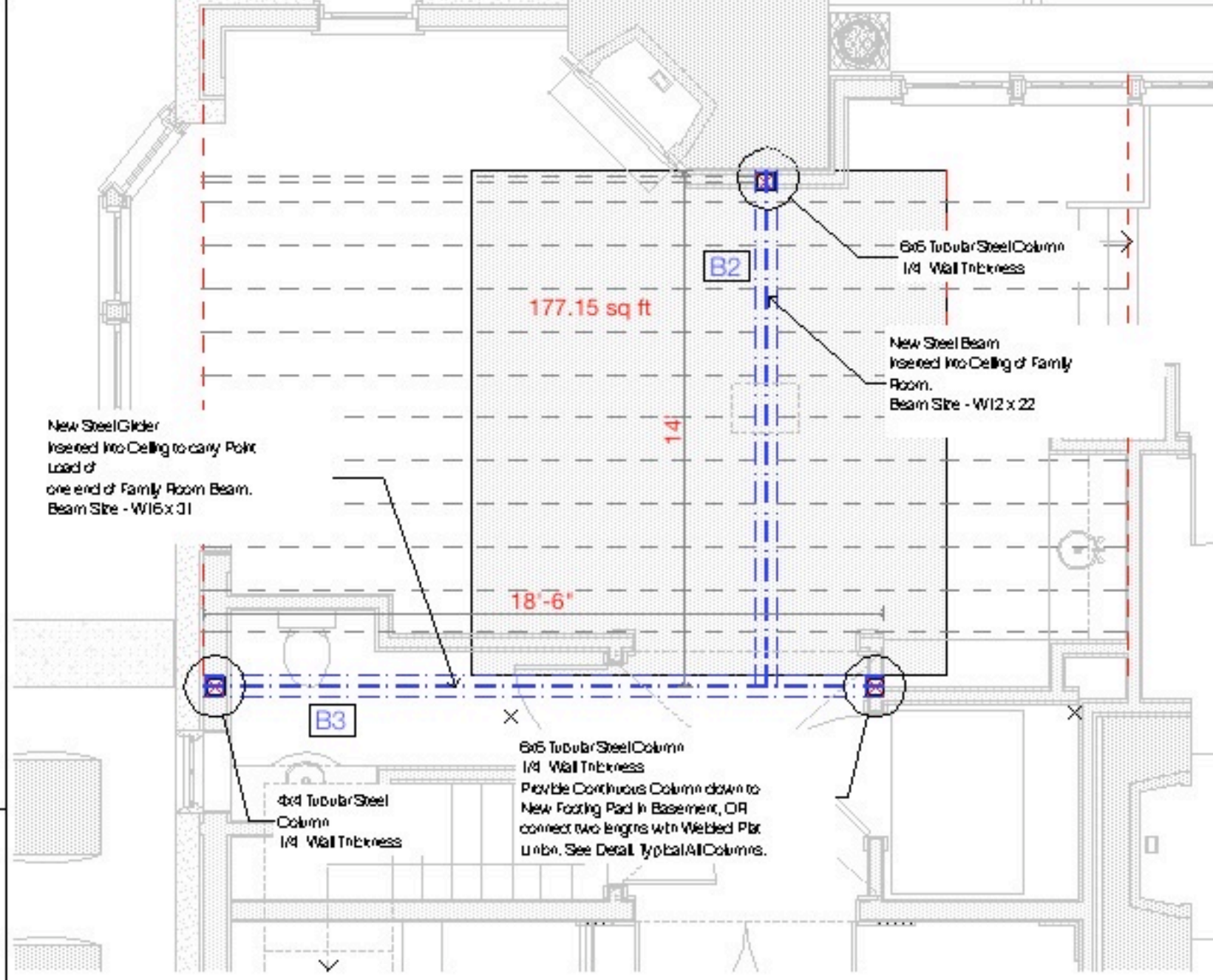
Typical Column to Beam Condition for Flush Beams 3" = 1'-0"



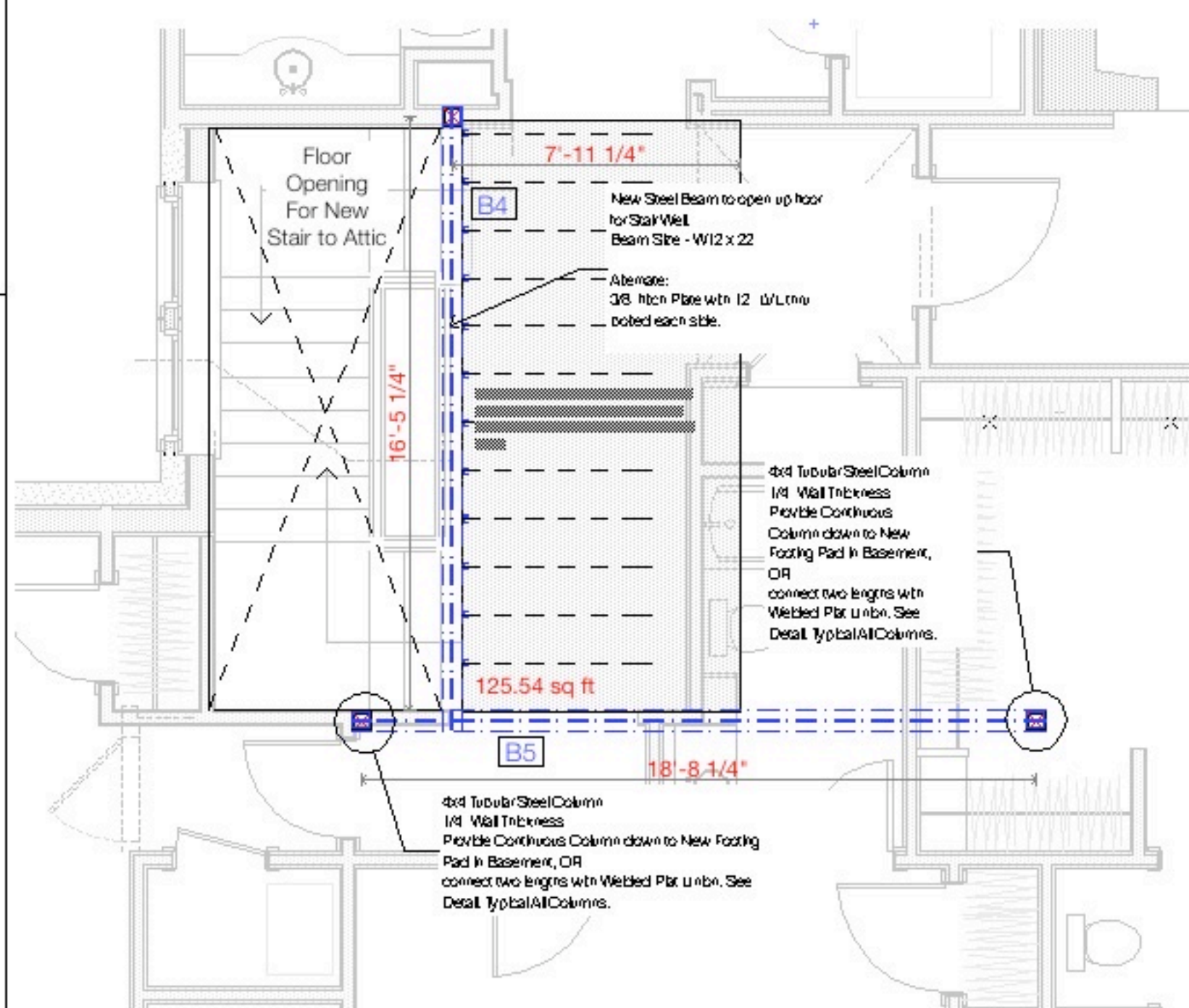
Column Unions if Required 3" = 1'-0"



Column Base & Footing Pads 3" = 1'-0"



Family Room Beams 3/8" = 1'-0"



Stair Hall Beams 3/8" = 1'-0"

Joseph Matto Architect - AIA  
Steel Beam Analysis

10/27/09

**31 Craig Residence - Master Bedroom Ceiling**

Description	Span Ft.	Trib. Width Ft.	Trib. Area Ft <sup>2</sup>	Dead Load Lbs./ft.	Live Load Lbs./ft.	Load Factors	Total Load Kips	Point Load Kips	Total Load Factors	Total Load Kips	w Kips/ft	Mmax Total Kips	Beam	Depth	NR	Defl.	L/360	Weight
Attic Fl.	26.75	18.50	495	15	35	1.00	24.74	0.00		24.74	0.925	82.74		12	118	0.45	0.89	1337.5
Combined	26.75		495				25			24.74	0.93	82.74		12	118	0.45	0.89	1337.5

**32 Craig Residence - Family Room Ceiling**

Description	Span Ft.	Trib. Width Ft.	Trib. Area Ft <sup>2</sup>	Dead Load Lbs./ft.	Live Load Lbs./ft.	Load Factors	Total Load Kips	Point Load Kips	Total Load Factors	Total Load Kips	w Kips/ft	Mmax Total Kips	Beam	Depth	NR	Defl.	L/360	Weight
Attic Floor	14	13.00	182	15	35	1.00	9.10	0.00		9.10	0.45	15.93		12	90	0.12	0.47	308
Attic Floor	14	13.00	182	15	35	1.00	9.10	0.00		9.10	0.45	15.93		12	90	0.12	0.47	308
Roof	14	13.00	182	15	35	1.00	9.10	0.00		9.10	0.45	15.93		12	90	0.12	0.47	308
Combined	14		182				9			9.10	0.45	47.78		12	90	0.12	0.47	308

**33 Craig Residence - Hall/Family Room Ceiling**

Description	Span Ft.	Trib. Width Ft.	Trib. Area Ft <sup>2</sup>	Dead Load Lbs./ft.	Live Load Lbs./ft.	Load Factors	Total Load Kips	Point Load Kips	Total Load Factors	Total Load Kips	w Kips/ft	Mmax Total Kips	Beam	Depth	NR	Defl.	L/360	Weight
Attic Fl.	18.5	1.00	19	15	45	1.00	1.11	23.88	1.40	34.55	1.87	79.90		16	93	0.45	0.52	373.9
Combined	18.5		19				1			34.55	1.87	79.90		16	93	0.45	0.52	373.9

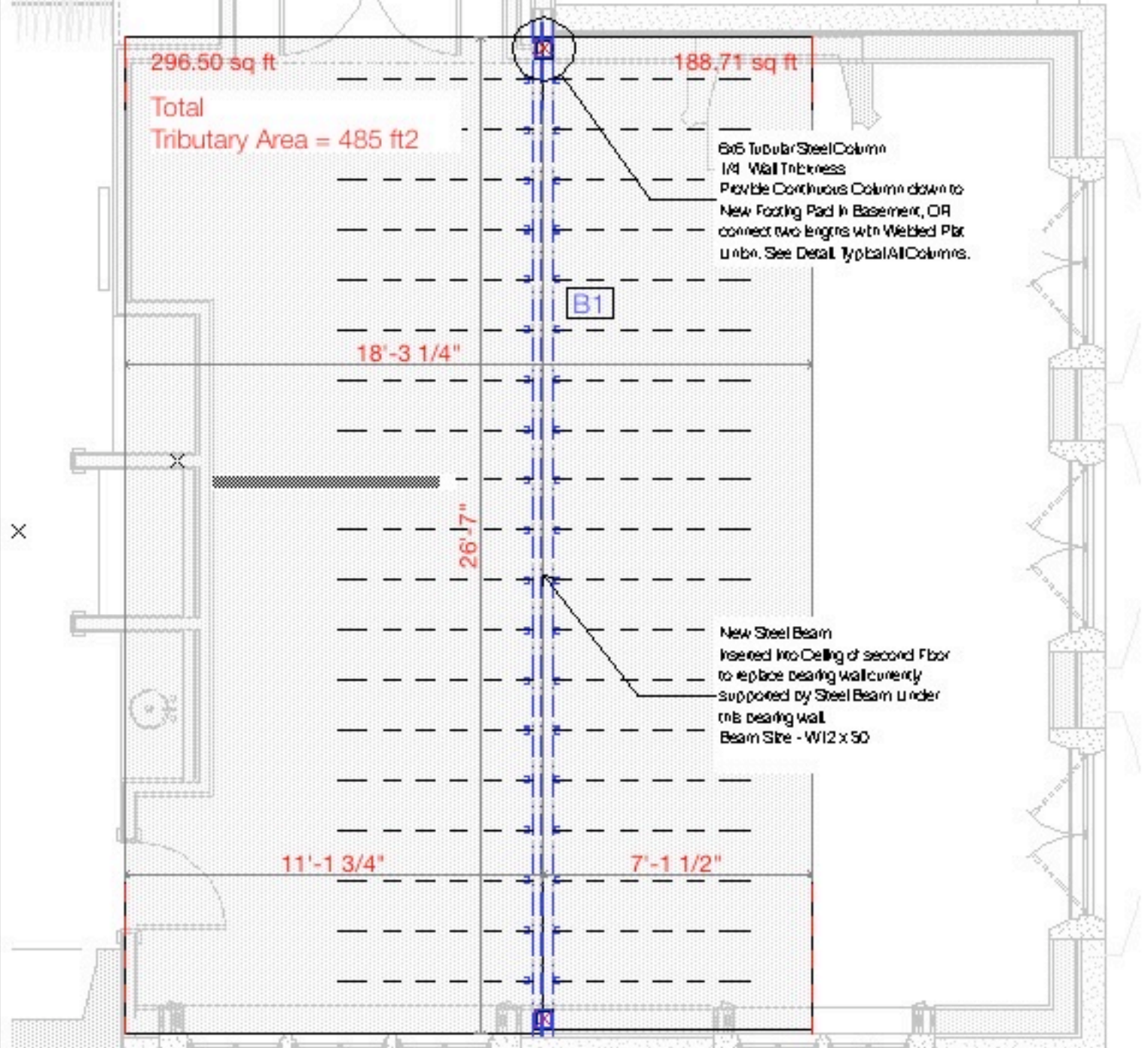
**34 Craig Residence - Stair Beam**

Description	Span Ft.	Trib. Width Ft.	Trib. Area Ft <sup>2</sup>	Dead Load Lbs./ft.	Live Load Lbs./ft.	Load Factors	Total Load Kips	Point Load Kips	Total Load Factors	Total Load Kips	w Kips/ft	Mmax Total Kips	Beam	Depth	NR	Defl.	L/360	Weight
Attic Fl.	16.5	8.00	132	15	45	1.00	7.92	0.00	1.00	7.92	0.48	16.34		12	30	0.31	0.55	231
Combined	16.5		132				8			7.92	0.48	16.34		12	30	0.31	0.55	231

**35 Craig Residence - Stair/Hall Girder**

Description	Span Ft.	Trib. Width Ft.	Trib. Area Ft <sup>2</sup>	Dead Load Lbs./ft.	Live Load Lbs./ft.	Load Factors	Total Load Kips	Point Load Kips	Total Load Factors	Total Load Kips	w Kips/ft	Mmax Total Kips	Beam	Depth	NR	Defl.	L/360	Weight
Attic Fl.	18.8	1.00	1	15	35	1.00	0.05	8.17	1.25	10.26	0.55	24.11		12	42	0.41	0.63	397.2
Combined	18.8		1				0			10.26	0.55	24.11		12	42	0.41	0.63	397.2

Design Loads and Moment Summary for Beam & Girder Selection



Master Bedroom Beams 3/8" = 1'-0"